



2017



INVICTA

INVINCIBLE IN DETAIL

SINCE 1837



THUNDER BOLT

The Invicta Thunder Bolt. Model 21349. Movement: Professional Swiss Quartz Chronograph. Case and Dial: 52mm. Mother of Pearl and Oyster dial. Solid stainless steel case. Unidirectional rotating bezel with individually plated stainless steel rope design cables in 18kt rosegold. Stainless steel screw down crown and pushers in 18kt rosegold plating. Flame fusion crystal. Date display. Band: High grade polyurethane with stainless steel cables and buckle. Water Resistance: 500 meters tested.

JANUARY	S	M	T	W	T	F	S	S	M	T	W	T	F	S	S	M	T	W	T	F	S	S	M	T							
2017	01	02	03	04	05	06	07	08	09	10	11	12	13	14	15	16	17	18	19	20	21	22	23	24	25	26	27	28	29	30	31



DISNEY

The Invicta Disney Limited Edition Pocket Watch. Model 22747. Movement: Professional Quartz Chronograph. Case and Dial: 50mm. Metal Dial. Solid stainless steel case with black ionic plating. Push and pull crown and pushers. Mineral Crystal. Solid stainless steel chain with black ionic plating. Water Resistance: 30 meters tested.

FEBRUARY

2017

W	T	F	S	S	M	T	W	T	F	S	S	M	T	W	T	F	S	S	M	T							
01	02	03	04	05	06	07	08	09	10	11	12	13	14	15	16	17	18	19	20	21	22	23	24	25	26	27	28



ANGEL

The Invicta Angel. Model 21703. Movement: Professional Quartz. Case and Dial: 38mm. Mother of Pearl dial. Solid stainless steel case with 18kt gold plating. Push and pull crown. Flame fusion crystal. Tritium luminous hands and hour markers. Date display. Band: High grade polyurethane band with 18kt gold plated buckle. Water resistance: 100 meters tested.

MARCH

2017

W	T	F	S	S	M	T	W	T	F	S	S	M	T	W	T	F	S	S	M	T	W	T	F							
01	02	03	04	05	06	07	08	09	10	11	12	13	14	15	16	17	18	19	20	21	22	23	24	25	26	27	28	29	30	31



PRO DIVER

The Invicta Pro Diver X-Wing. Model 22424. Movement: Professional Swiss Quartz Chronograph. Case and Dial: 46mm. Metal Dial. Fixed Bezel. Solid stainless steel case. Screw down crown and pushers. Flame fusion crystal. Superluminova luminous hands and hour markers. Date display. Band: Solid stainless steel band with dual deployment clasp. Water Resistance: 300 meters tested.

APRIL	S	S	M	T	W	T	F	S	S	M	T	W	T	F	S	S	M	T	W	T	F	S	S	M	T	W	T	F	S	
2017	01	02	03	04	05	06	07	08	09	10	11	12	13	14	15	16	17	18	19	20	21	22	23	24	25	26	27	28	29	30



PRO DIVER

The Invicta Pro Diver. Model 23070. Movement: Professional Japanese Quartz. Case and Dial: 48mm. Mother of Pearl and Oyster Dial. Solid stainless steel case with black ionic plating. Unidirectional rotating bezel with black ionic plating. Mineral crystal. Superluminova luminous hands and hour markers. Date display. Band: Solid stainless band with black ionic plating and dual deployment clasp. Water Resistance: 100 meters tested.

MAY	M	T	W	T	F	S	S	M	T	W	T	F	S	S	M	T	W	T	F	S	S	M	T	W							
2017	01	02	03	04	05	06	07	08	09	10	11	12	13	14	15	16	17	18	19	20	21	22	23	24	25	26	27	28	29	30	31



RESERVE

The Invicta Reserve Subaqua Sea Dragon. Model 21641. Movement: Professional Swiss Quartz Chronograph. Case and Dial: 52mm. Metal and plastic dial. Solid stainless steel case with 18kt gold plating. Unidirectional rotating bezel with 18kt gold plating. Screw down crown and pushers. Flame fusion crystal. Luminous hands. Date display. Band: High grade polyurethane and silicone band with 18kt gold plated inserts and buckle. Water Resistance: 500 meters tested.

SUBAQUA SEA DRAGON

JUNE	T	F	S	S	M	T	W	T	F	S	S	M	T	W	T	F	S	S	M	T	W	T	F							
2017	01	02	03	04	05	06	07	08	09	10	11	12	13	14	15	16	17	18	19	20	21	22	23	24	25	26	27	28	29	30



JASON TAYLOR

The Invicta Jason Taylor S1 Rally, Model 22379. Movement: Professional Swiss Quartz Chronograph. Case and Dial: 48mm. Metal Dial. Solid stainless steel case. Push and pull crown and pushers. Mineral Crystal. Luminous hands. Date display. Band: High grade leather strap with buckle. Water resistance: 100 meters tested.

JULY

2017

SUNDAY

S S M T W T F S S M T W T F S S M T W T F S S M

01 02 03 04 05 06 07 08 09 10 11 12 13 14 15 16 17 18 19 20 21 22 23 24 25 26 27 28 29 30 31



AKULA

The Invicta Akula. Model 22374. Movement: Professional Swiss Quartz Chronograph. Case and Dial: 53.8mm. Metal Dial. Solid stainless steel case with high grade polyurethane rubber. Push and Pull crown with push down pushers. Flame fusion crystal. Tritnite Luminous hands and index markers, Date display. Band: High grade polyurethane band with black ionic stainless steel inserts and buckle. Water resistance: 100 meters tested.

AUGUST	T	W	T	F	S	S	M	T	W	T	F	S	S	M	T	W	T	F	S	S	M	T	W	T							
2017	01	02	03	04	05	06	07	08	09	10	11	12	13	14	15	16	17	18	19	20	21	22	23	24	25	26	27	28	29	30	31



LUPAH ESPADON

The Invicta Lupah Espadon. Model 22490. Movement: Professional Quartz Chronograph. Case and Dial: 52mm. Metal Dial. Solid stainless steel case with black ionic plating. Unidirectional rotating bezel with black ionic plating. Screw down crown and pushers. Flame fusion crystal. Tritrite luminous hands and hour markers. Date display. Band: High grade leather band with black ionic plated buckle. Water Resistance: 100 meters tested.

SEPTEMBER

2017

F	S	S	M	T	W	T	F	S	M	T	W	T	F	S	M	T	W	T	F	S	M	T	W	T	F	S			
01	02	03	04	05	06	07	08	09	10	11	12	13	14	15	16	17	18	19	20	21	22	23	24	25	26	27	28	29	30

LUPAH ESPADON



JASON TAYLOR

The Invicta Jason Taylor Sea Dragon. Model 22270. Movement: Professional Swiss Quartz Chronograph. Case and Dial: 52mm. Metal and Carbon Fiber Dial. Solid stainless steel case with black ionic plating. Unidirectional rotating bezel with black ionic plating. Push and pull crown and pushers with black ionic plating. Flame fusion crystal. Luminous hands. Date display. Band: High grade stainless steel band with black ionic plating and dual deployment clasp. Water Resistance: 500 meters tested.

OCTOBER

2017

S	M	T	W	T	F	S	S	M	T	W	T	F	S	S	M	T	W	T	F	S	S	M	T								
	01	02	03	04	05	06	07	08	09	10	11	12	13	14	15	16	17	18	19	20	21	22	23	24	25	26	27	28	29	30	31

SEA DRAGON



S1 RALLY

The Invicta S1 Rally, Model 20334. Movement: Professional Japanese Quartz Chronograph. Case and Dial: 49mm, Metal Dial. Solid stainless steel case with 18kt rose gold plating. Push and pull crown. Flame fusion crystal. Tritnite luminous hands. Date display. Band: High grade polyurethane band with 18kt rose gold plated buckle. Water Resistance: 100 meters tested.

NOVEMBER

2017

W	T	F	S	S	M	T	W	T	F	S	S	M	T	W	T	F	S	S	M	T	W	T							
01	02	03	04	05	06	07	08	09	10	11	12	13	14	15	16	17	18	19	20	21	22	23	24	25	26	27	28	29	30



RESERVE SUBAQUA

The Invicta Reserve. Model 22138. Movement: Professional Swiss Quartz Chronograph. Case and Dial: 52mm. Metal Dial. Solid stainless steel case with black ionic plating. Screw down crown and pusher. Fixed Bezel. Flame fusion crystal. Superluminova luminous hands and hour markers. Date display. Band: High grade silicone band with black ionic plated buckle. Water Resistance: 500 meters tested.

DECEMBER	F	S	S	M	T	W	T	F	S	S	M	T	W	T	F	S	S	M	T	W	T	F	S	S							
2017	01	02	03	04	05	06	07	08	09	10	11	12	13	14	15	16	17	18	19	20	21	22	23	24	25	26	27	28	29	30	31

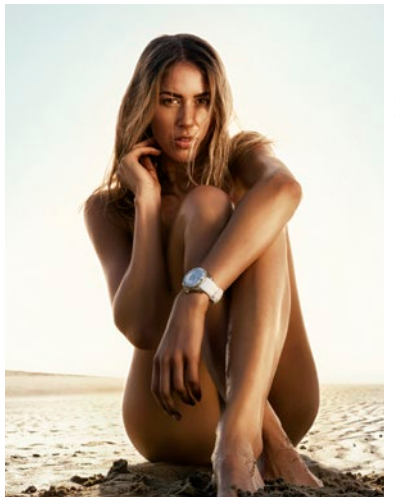
RESERVE SUBAQUA



JANUARY Model 21349



FEBRUARY Model 22747



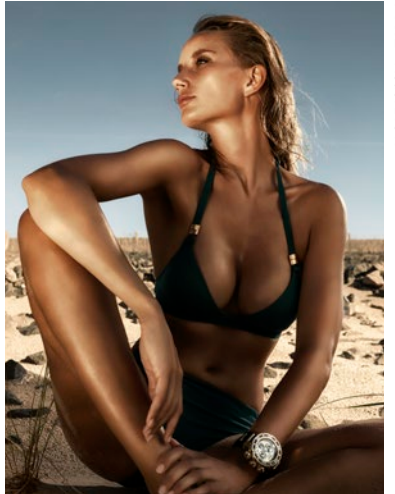
MARCH Model 21703



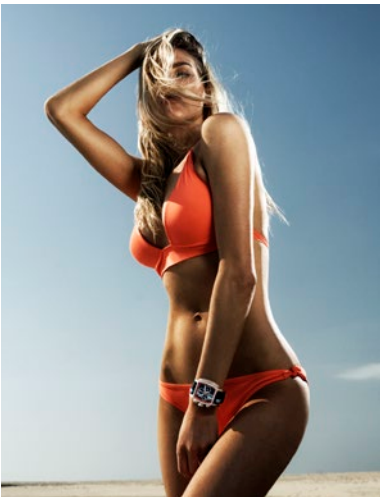
APRIL Model 22424



MAY Model 23070



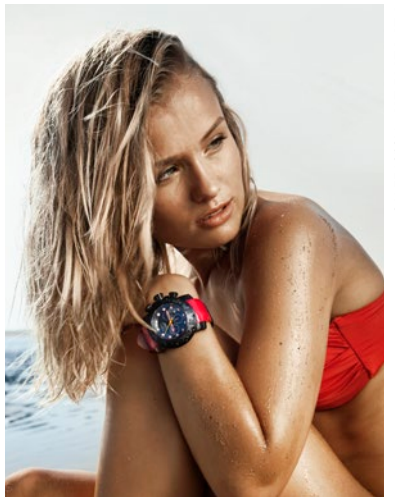
JUNE Model 21641



JULY Model 22379



AUGUST Model 22374



SEPTEMBER Model 22490



OCTOBER Model 22270



NOVEMBER Model 20334



DECEMBER Model 22138



JANUARY Model 21349
The Invicta Thunder Bolt



FEBRUARY Model 22747
The Invicta Disney Limited Edition Pocket Watch



MARCH Model 21703
The Invicta Angel



APRIL Model 22424
The Invicta Pro Diver X-Wing



MAY Model 23070
The Invicta Pro Diver



JUNE Model 21641
The Invicta Reserve Subaqua Sea Dragon



JULY Model 22379
The Invicta Jason Taylor S1 Rally



AUGUST Model 22374
The Invicta Akula



SEPTEMBER Model 22490
The Invicta Lupah Espadon



OCTOBER Model 22270
The Invicta Jason Taylor Sea Dragon



NOVEMBER Model 20334
The Invicta S1 Rally



DECEMBER Model 22138
The Invicta Reserve Subaqua